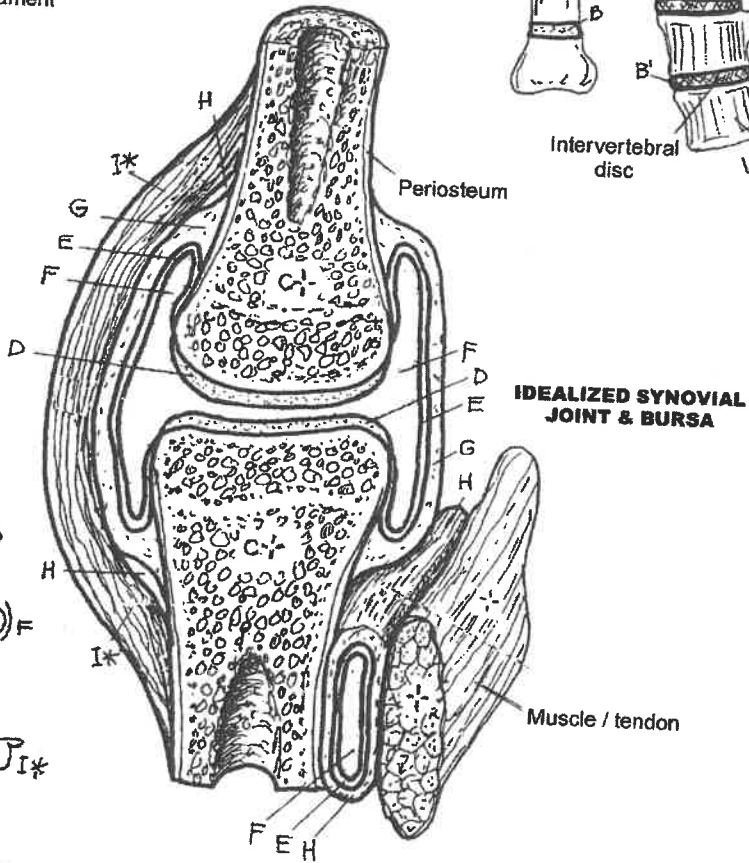
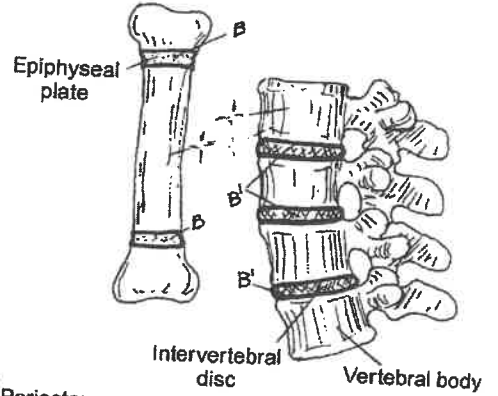
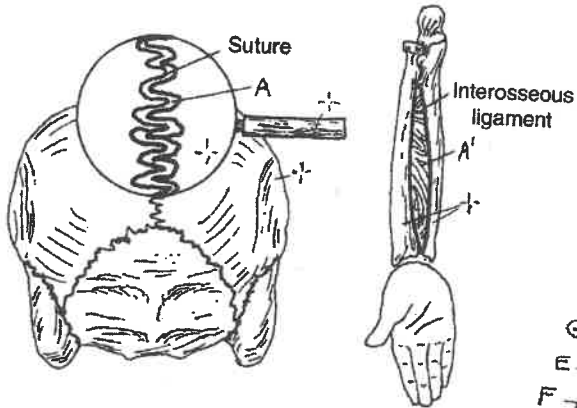


SKELETAL & ARTICULAR SYSTEMS CLASSIFICATION OF JOINTS

CN: Use a light blue for D, black for F, and gray for H.
 (1) Do not color the bones in the upper half of the page.
 (2) Below, color the arrows pointing to the location of the joints as well as the joint representations.

CARTILAGINOUS JOINT IMMOVABLE_A PARTLY MOVABLE_B

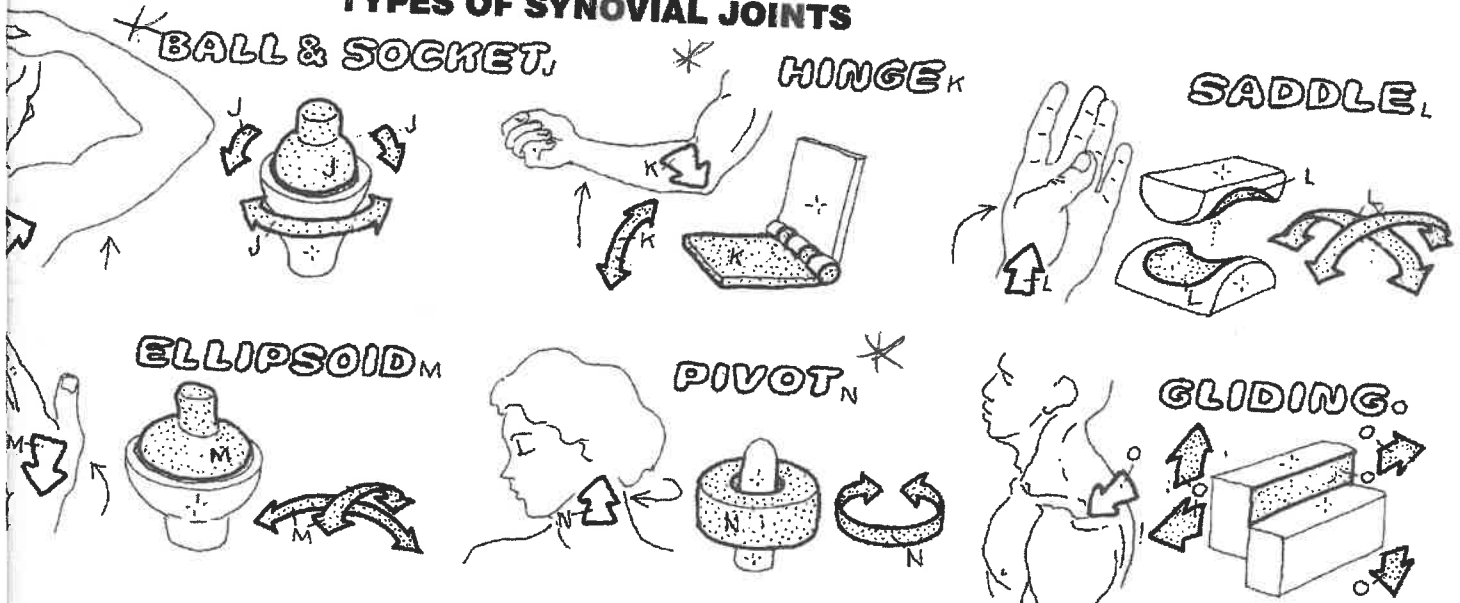
FIBROUS JOINT IMMOVABLE_A PARTLY MOVABLE_{A'}



SYNOVIAL JOINT (Freely movable)

- ARTICULATING BONES_C
- ARTICULAR CARTILAGE_D
- SYNOVIAL MEMBRANE_E
- SYNOVIAL CAVITY (FLUID)_F
- JOINT CAPSULE_G
- BURSA_H
- COLLATERAL LIGAMENT_{I*}

TYPES OF SYNOVIAL JOINTS



HCS 1050
JOINTS
/ 25 TOTAL MARKS

(10 marks)

Task

Fill in the table below by adding:

- the type of joint
- the bones involved.



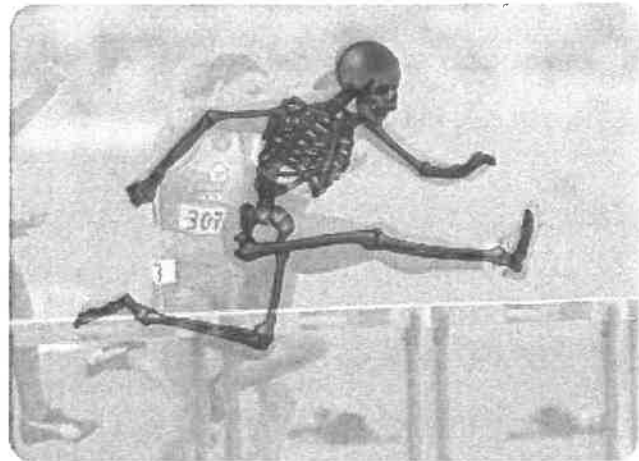
The word bank has all the words you need. The words in bold are used more than once.

| Location | Neck | Knee | Hip | Elbow | Shoulder |
|----------------|------|------|-----|-------|----------|
| Type of joint | | | | | |
| Bones involved | | | | | |

| Word bank | | |
|--|--|--|
| <ul style="list-style-type: none"> • pivot • humerus • ball and socket • pelvis | <ul style="list-style-type: none"> • femur • fibia • hinge • axis | <ul style="list-style-type: none"> • scapula • atlas • ulna |

Tasks

1 — Look at the table below about types of movement and the joints involved with various sporting actions.



2 — Fill in the table, using the example as a guide.

| Example | Area | Type of joint | Type of movement | Description of the action |
|---|------|---------------|------------------|--|
| Kicking a football | Knee | Hinge | Extension | Lower leg moves forward to straighten after contact with the ball. |
| Hurdler lifting lead leg to clear a hurdle | | | | |
| Swimmer performing front crawl arm action | | | | |
| Shooting arm action when scoring in basketball or netball | | | | |

