

**SPORTS MEDICINE HCS 1050
BONE STRUCTURE AND FUNCTION
/ 18 TOTAL MARKS**

1. What are the 5 functions of the skeletal system? (10 marks)

a. _____ -

b. _____ -

c. _____ -

d. _____ -

e. _____ -

2. What are the 2 major skeletal systems? (4 marks)

--	--

3. What are the 4 basic bone shapes? (4 marks)

a. _____

b. _____

c. _____

d. _____

Tasks

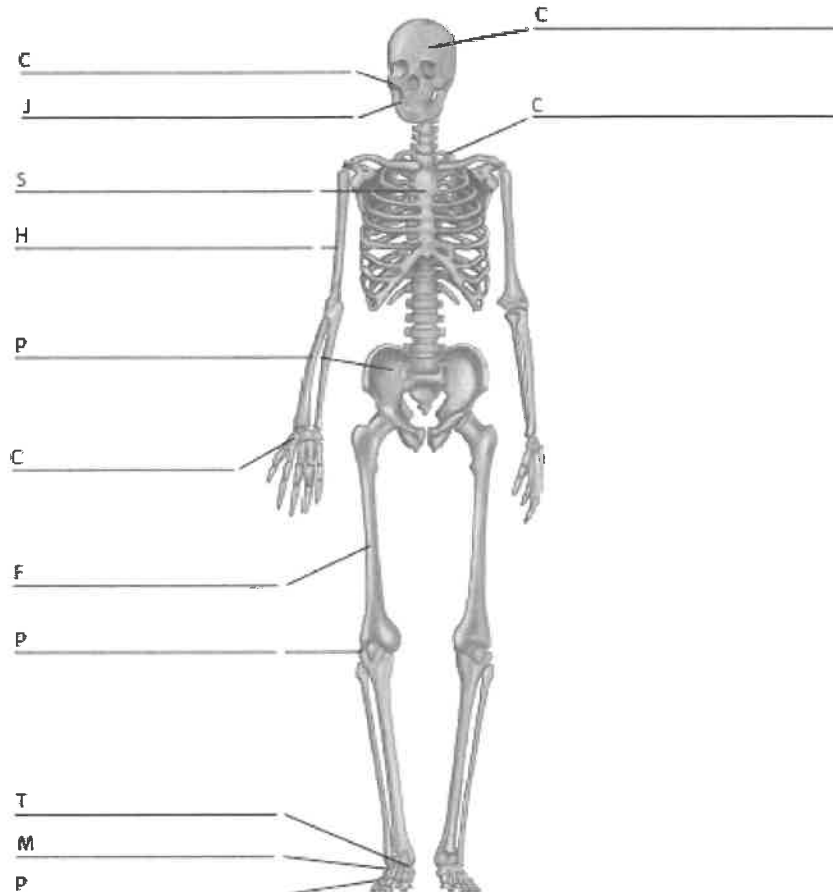
1 — Study the diagram of a skeleton below.

2 — Colour in the bones, according to their classification. Use a different colour for long, short, flat and irregular bones.

3 — Fill the colours in on the key with one colour for each class of bone used in question 2.

4 — Label the skeleton with the names of the bones. The first initial of each bone has been given to help you.

Use the groupings and the labelled diagram of a skeleton in the Student's Book to help you.

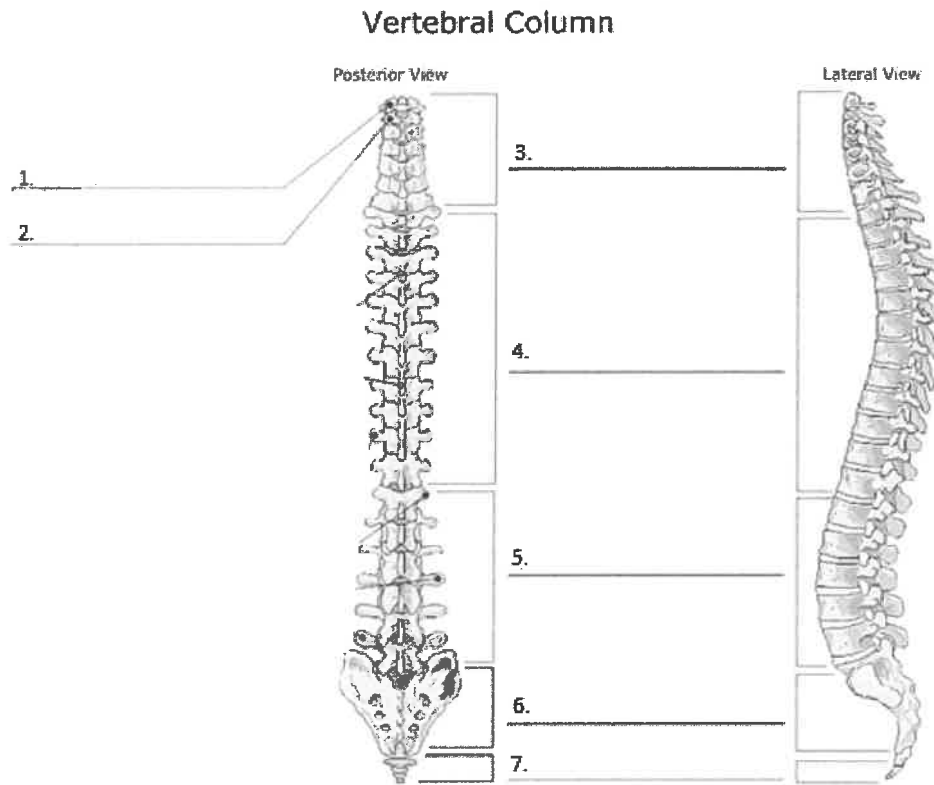


(4 marks)

Key:

- Long bones
- Short bones
- Flat bones
- Irregular bones

VERTEBRAL COLUMN /10 TOTAL MARKS



1. Fill in the blanks above (7 marks)
2. Create a legend and colour in the cervical, thoracic and lumbar spine (3 marks)